



*Paradise
View - 1*

by BLANCO THORNTON



Welcome to the World of Blanco Thornton

At Blanco Thornton, we focus on the intersection that matter the most - real estate, technology, people and the neighborhood - to deliver the assurance you need to build a better tomorrow.



Above it All

Though prized for its skyline views and easy access to the East and the West, Dubai offers a dynamic lifestyle in its own right. Its cosmopolitan society creates a lively atmosphere and exemplify the flourishing commercial, industrial and cultural landscape rich with shopping malls, restaurants, amusement parks, entertainment hubs, galleries, museums, live music, and performing arts. Add to this an abundance of leafy parks along with Dubai's extraordinary affinity for waterfront lifestyle and you've found yourself at home in one of the world's most exciting and livable destinations.



Hello Neighborhood...

Majan, originally branded the downtown of Dubailand and now referred popularly as Wadi Al Safa, is a storied slice of gated community living, within a masterplan emphasising landscaped green spaces, parks, fountains and public squares, with a significant footprint of street level retail.

The neighborhood has a well-developed infrastructure and includes supermarkets, shopping malls, schools, business centers, restaurants, mosques, and other facilities.



Right Place Right Sized

At Majan, you will find lifestyle options that are designed for the way you live, work, and entertain. A day here is designed with you in mind - with a series of unique and inspirational lifestyle options for all our residents, catering to a wide array of social, health, wellness, leisure and fitness desires and aspirations.

Pedestrian spaces and parks offer opportunities for relaxation and recreations. For the culinary minded, there is a wealth of exceptional restaurants from a diverse range of cuisines that are sure to enchant your palate.

Tailored for City Living

Stay connected! At Majan, life merges with a distinct Dubai spirit and connects its residents to local mindsets through easy access. The result: exciting, unexpected moments. When you live here, the whole of Dubai is your personal playground, buzzy and cosmopolitan, that you can visit without even feeling that you left home.

Inside Majan

BEAUTY & FITNESS

Core Gym
Kamal Wahba Salon
Project Fitness
Streaks Ladies Salon
VOG Beauty Salon for Ladies
Way Out
Zava Gents Salon

CAFES & RESTAURANTS

Daddy's Smoke House
EK 311 Cafe
Coco and Orchid
J5
Kebab Rolls
Konak Turkish Restaurant
Mirchi Garden
Noor Halab Cafeteria
Purple Fork
Zeeko

CLINICS & HOSPITALS

Al Manara Pharmacy
Dr. Kamkar Medical &
Physiotherapy Centre
Health Avenue Polyclinic

PARKS

Majan Active Park
Majan Central Park
Majan Family Park

SCHOOLS & PLAY CENTERS

Elmar Kids Amusement Center
Kids Spot Nursery

SHOPPING MALLS

Remal Mall
Midtown Central

SUPERMARKETS

AlDar Butchery & Grill Meat Shop
All Day Minimart
Al Majan Grocery
Anvar Minimart
Carrefour
FoodsCo Store
Grandiose Supermarket
Hopinz
Jef the Grocer
Jmart supermarket
Monh Supermarket
Quick Supermarket
Viva
Yenboa Al Madeena
Zoom Market

WORSHIP PLACES

Hussain Abdulla Albahri
Jama Al Rasheed

Around Majan

ATTRACTIONS

Dubai Miracle Garden
Global Village
The Storm Coaster
IMG Worlds of Adventure

CINEMAS

Cinema Akil
Novo Cinema IMG
Vox Cinemas MOE

CLINICS & HOSPITALS

Cosmo Secret Medical
Centre
Emirates Clinic

GOLF CLUBS

Arabian Ranches Golf Club
Dubai Hills Golf Club
The Track Meydan Golf Club

SCHOOLS & PLAY CENTERS

Dunecrest American School
Falcon City Nursery
GEMS First Point School
Indian International School
Odyssey Nursery
The Aquila School

WORSHIP PLACES

Dubai City Church
Guru Nanak Darbar
Holy Trinity Church
St. Mary Catholic Church
Shirdi Sai Baba Mandir

SHOPPING MALLS

Arabian Ranches Retail Mall
Cityland Mall
Dubai Outlet Mall
Dubai Hills Mall

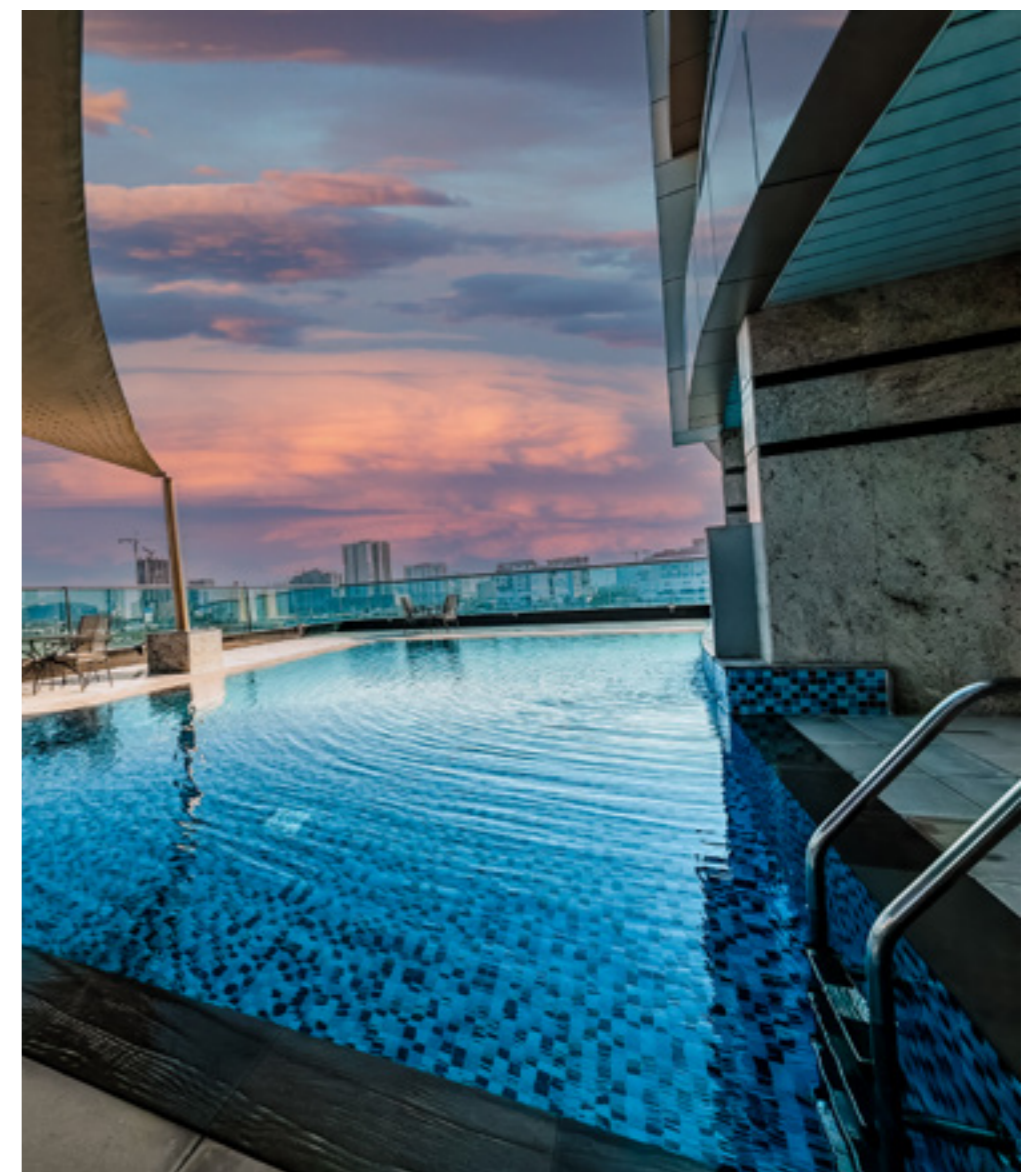
1. Dubai International Airport 20 Mins
2. Mirdiff City Centre 15 Mins
3. The Dubai Mall 15 Mins
4. Meydan Racecourse 15 Mins
5. Burj Al Arab 20 Mins
6. Mall of the Emirates 15 Mins
7. Palm Jumeirah 25 Mins
8. IMG Worlds of Adventure 5 Mins
9. Global Village 10 Mins
10. The Walk, JBR 30 Mins
11. Butterfly Gardens 15 Mins
12. Dubai Autodrome 20 Mins
13. Al Maktoum International Airport 30 Mins



Paradise... Conveniently nestled at the edge of Majan and Barari

Grassy lawns for playing and picnicking; trails for meandering; cafes and restaurants for lingering brunches; institutions of education and popular attractions all around, discover the many charms of this sophisticated and storied slice of Dubai where you call your home, a paradise!

Nestled next to the city's most renowned green oasis, this paradise borders Al Barari, offering exceptional opportunities for mindful recreation and leisure.







Residences that Inspire

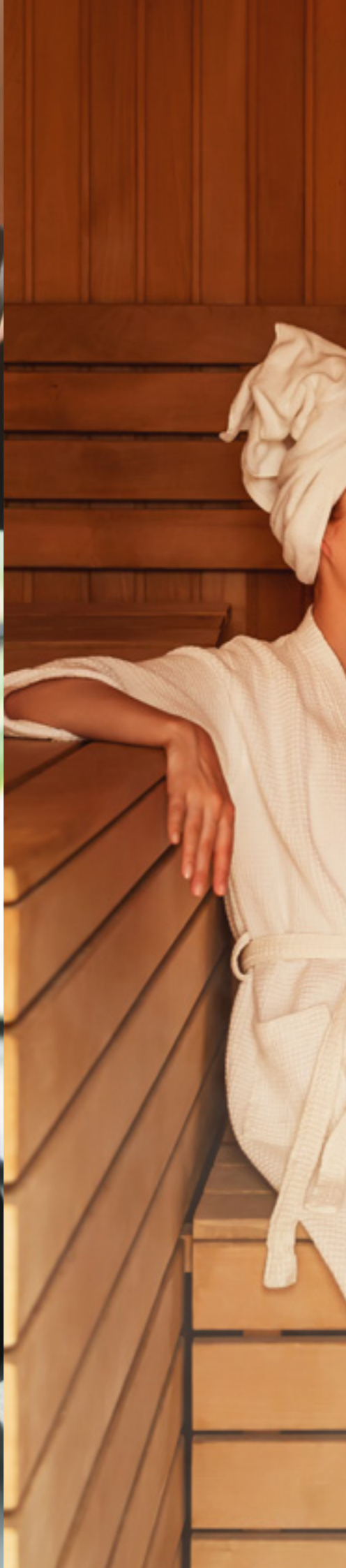
Paradise View 1 offers a collection of studios, one-, two- & three-bedroom apartments, each designed to optimize your living experience. This mid-rise property offers breath-taking-views in every direction and presents panoramic views of the fascinating green driveway on one side and that of life within the gated community on the other. With everything easily accessible, residents can relax in the privacy of the spacious balcony, gather with friends by the poolside, or simply take in the city lights.



A Synthesis of Comfort, Practicality & Tradition

Every element of your residence is meticulously chosen to create a harmonious blend of style and practicality, enhancing your living experience in the most elegant way. Paradise View 1 offers furnished residences that perfectly blend urban living with the allure of serene green spaces. Designed for those who appreciate peaceful weekends and the charm of quiet city living, these residences encapsulate the intimate, inviting spirit synonymous with the neighborhood.

*Furniture and furnishing elements showcased herein might differ from the actual interior concept.



Designed Around Your Lifestyle

The amenities at Paradise View 1 is an invaluable addition to the lives of residents, providing space and resources where you can replenish mind, body, and spirit. Enjoy limitless opportunities for recreation, relaxation and inspiration. Our resident-only amenities include a versatile indoor pool, a dedicated fitness studio for your wellness routine, a shared sauna space along with a jogging track that runs adjacent to the building.



Exquisite Touches to Make Your Stay Comfortable

A welcoming face greets you twenty-four hours a day, seven days a week. Apart from the thoughtfully laid out amenities, Paradise View 1 provides a full range of services that provide the comforts of home as it should be. Highly trained staff provide around-the-clock assistance with 24-hour security and an every-ready concierge. District cooling and the private-on-site parking adds to the peace of mind and convenience.



Your Definitive Invitation to Join the Golden League

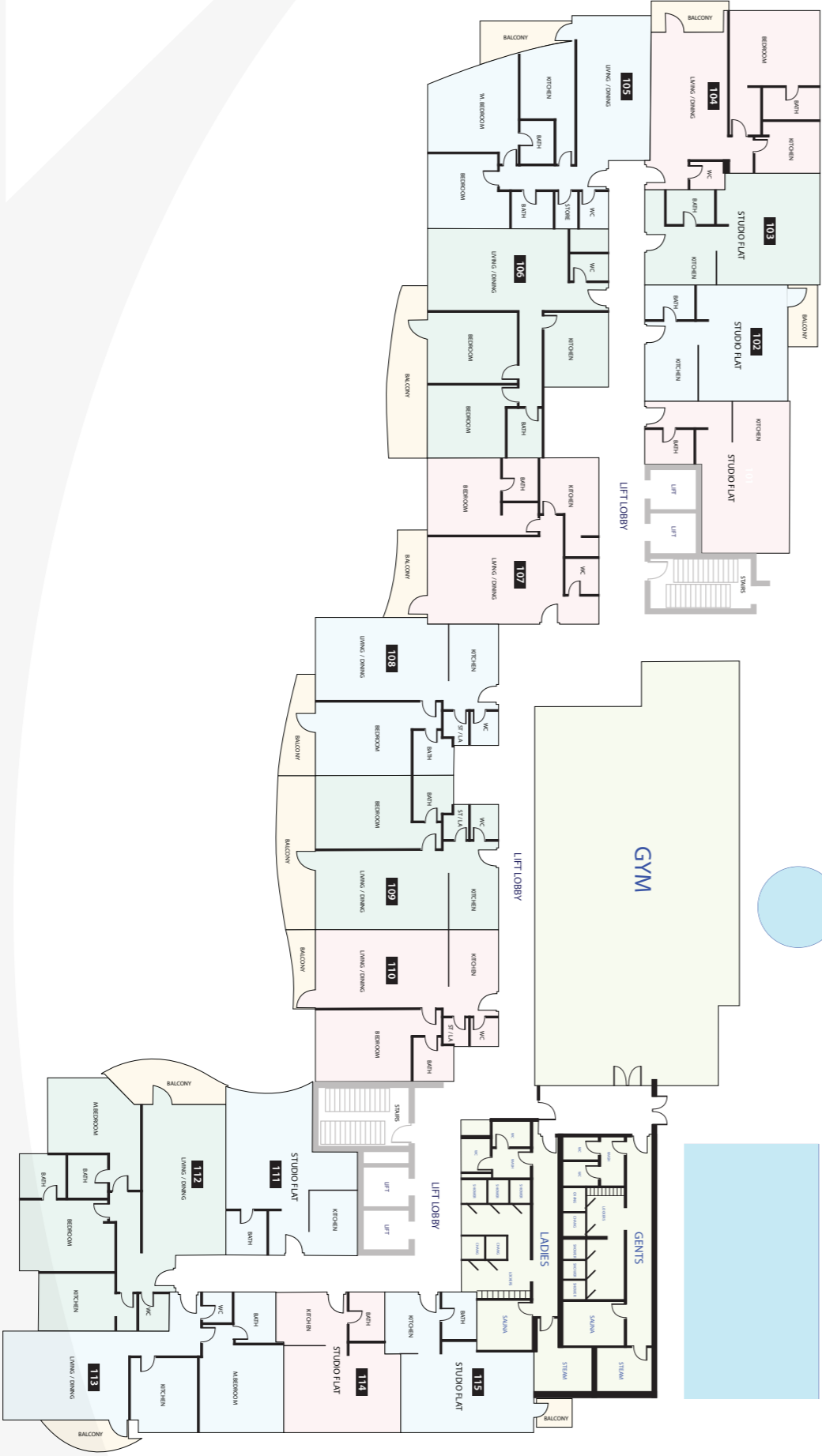
With the long-term residency and golden visa scheme, the prospect of investing and living in Dubai has become more appealing for the global citizen. Real estate investors can obtain a -10year renewable residence visa, popularly known as the 'Golden Visa' by purchasing a property worth a minimum of AED 2 million. After obtaining a -10year residency visa, you can sponsor your spouse and dependents, while extending your sponsorship to an executive director and one advisor, in addition to your family. Welcome to the upper side of urban living!



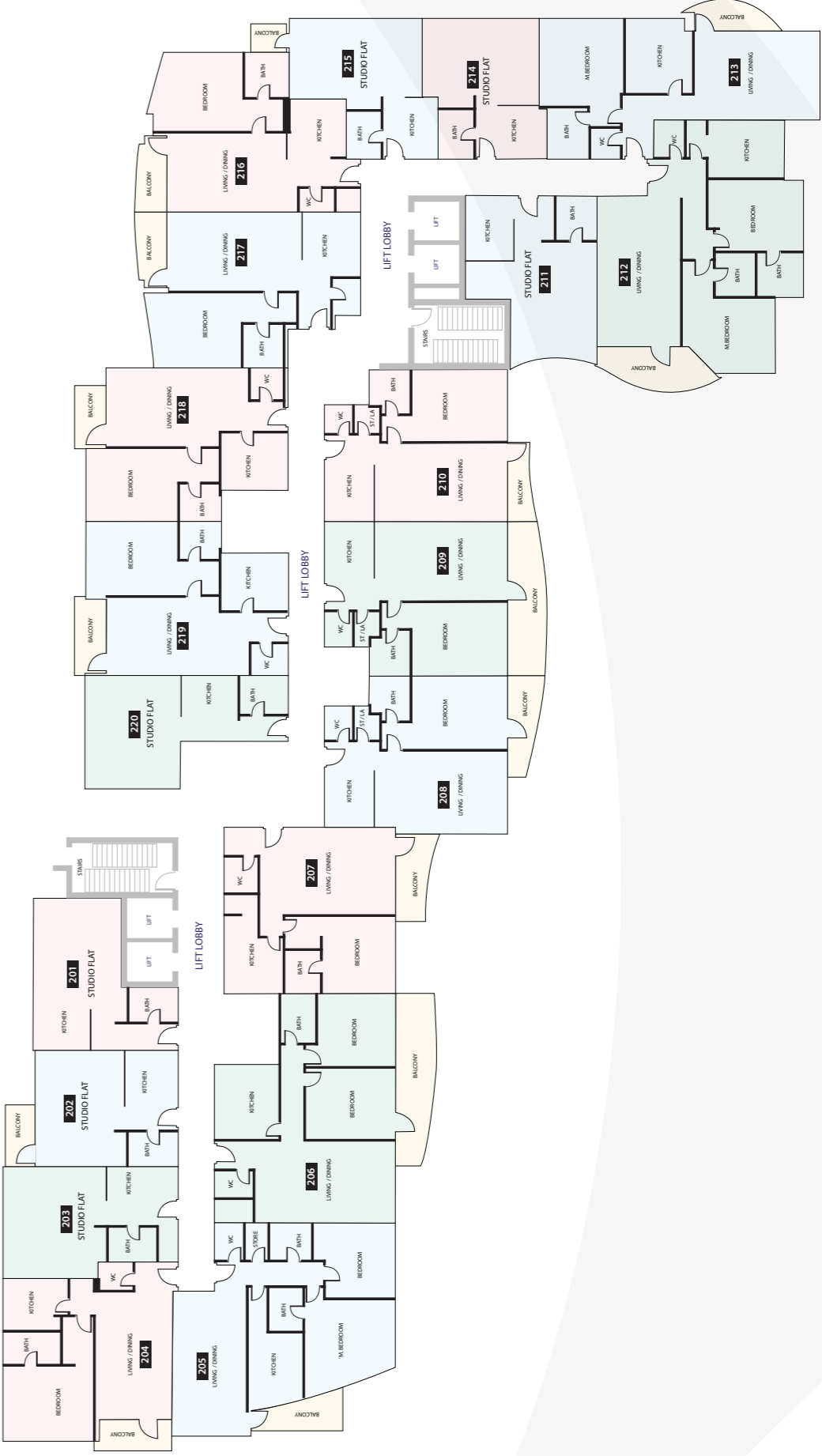
Perfect Proportions for Contemporary Living

Studio, one-, two- and three-bedroom residences offer space configured for comfortable contemporary living. The pursuit of innovative design is integral to the quality of our residents' experience - the reason why we have partnered with leading designers to provide these furnished apartments with a blend of style and functionality.

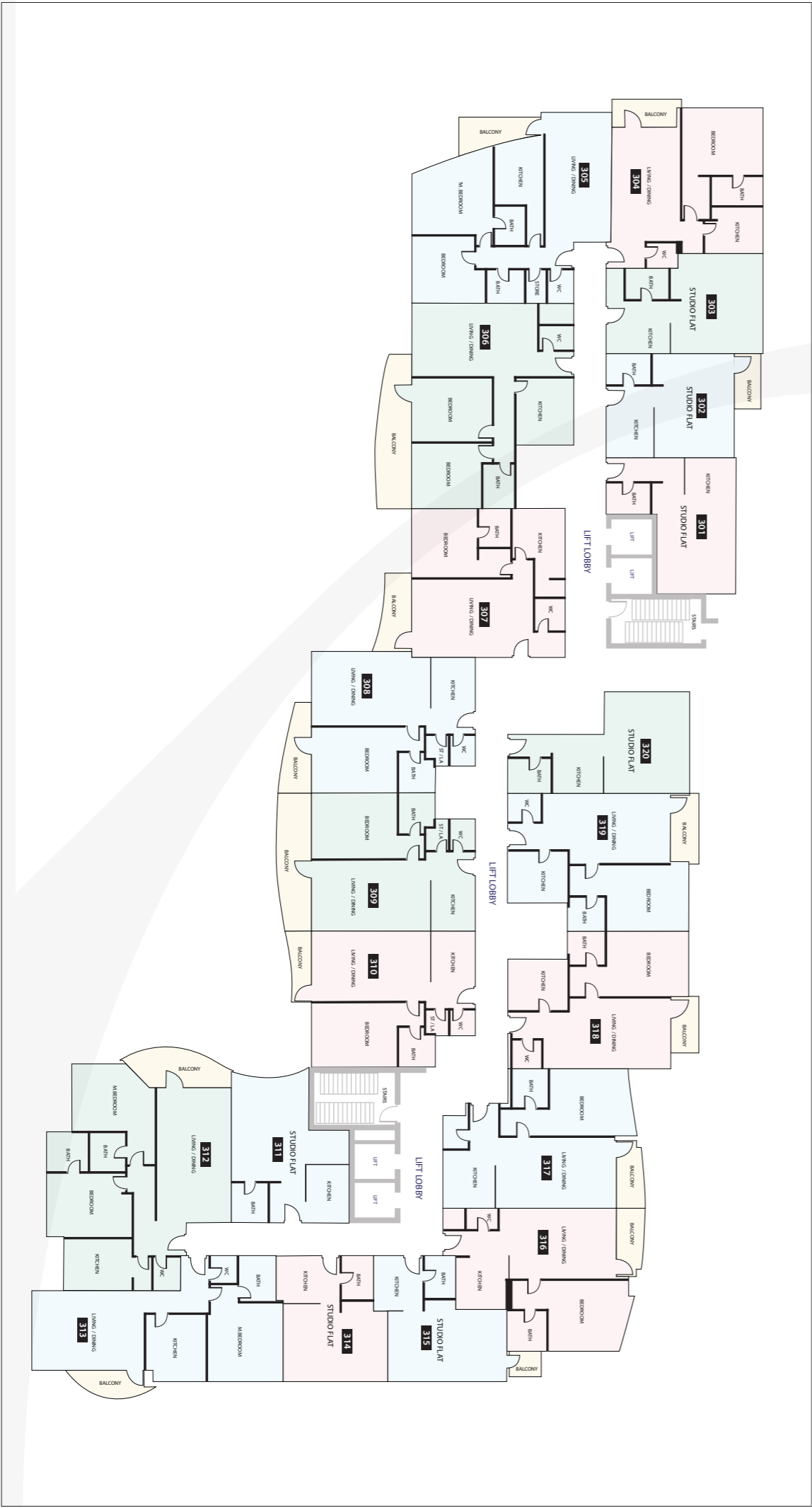
FLOOR 1



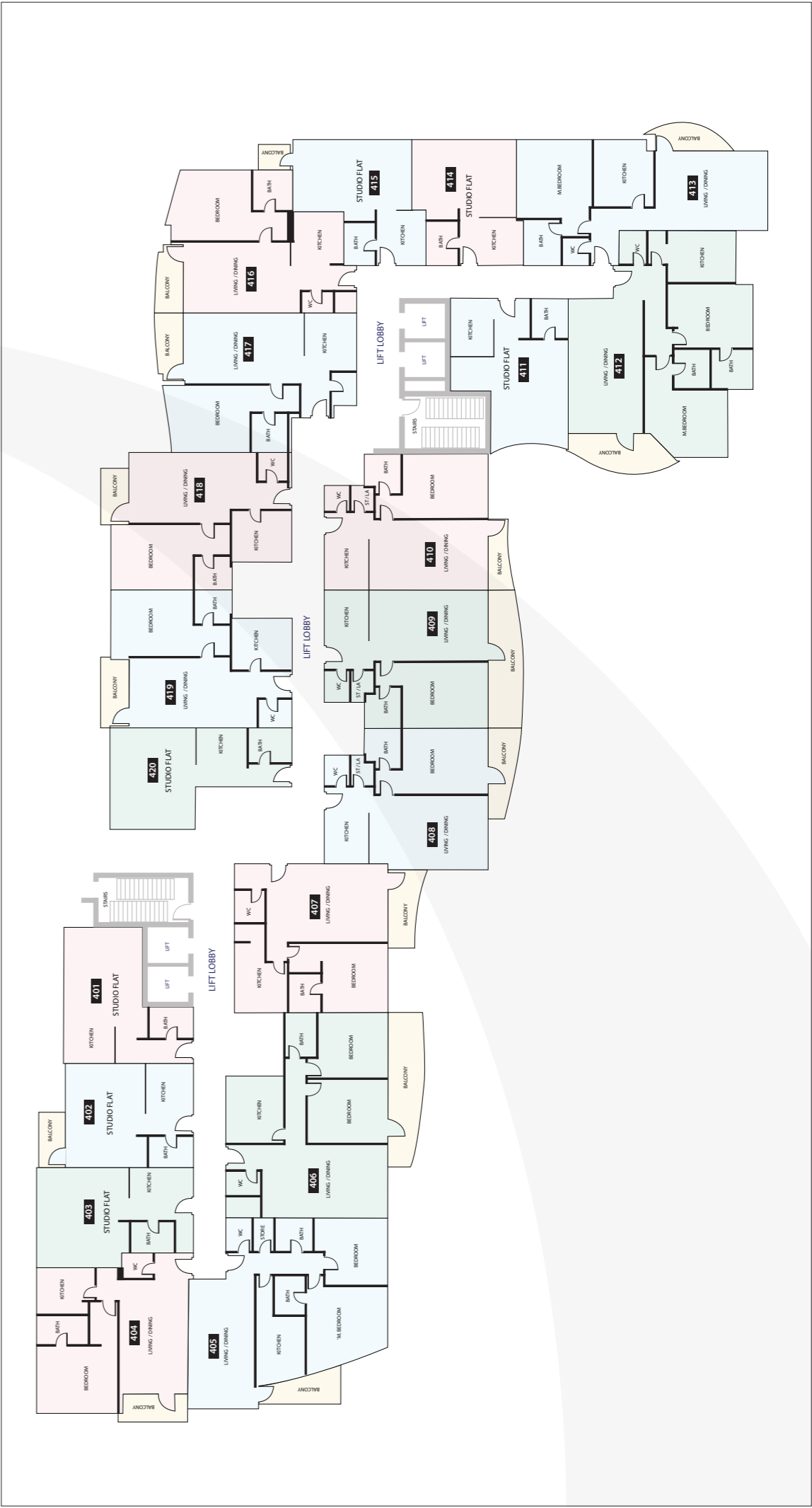
FLOOR 2



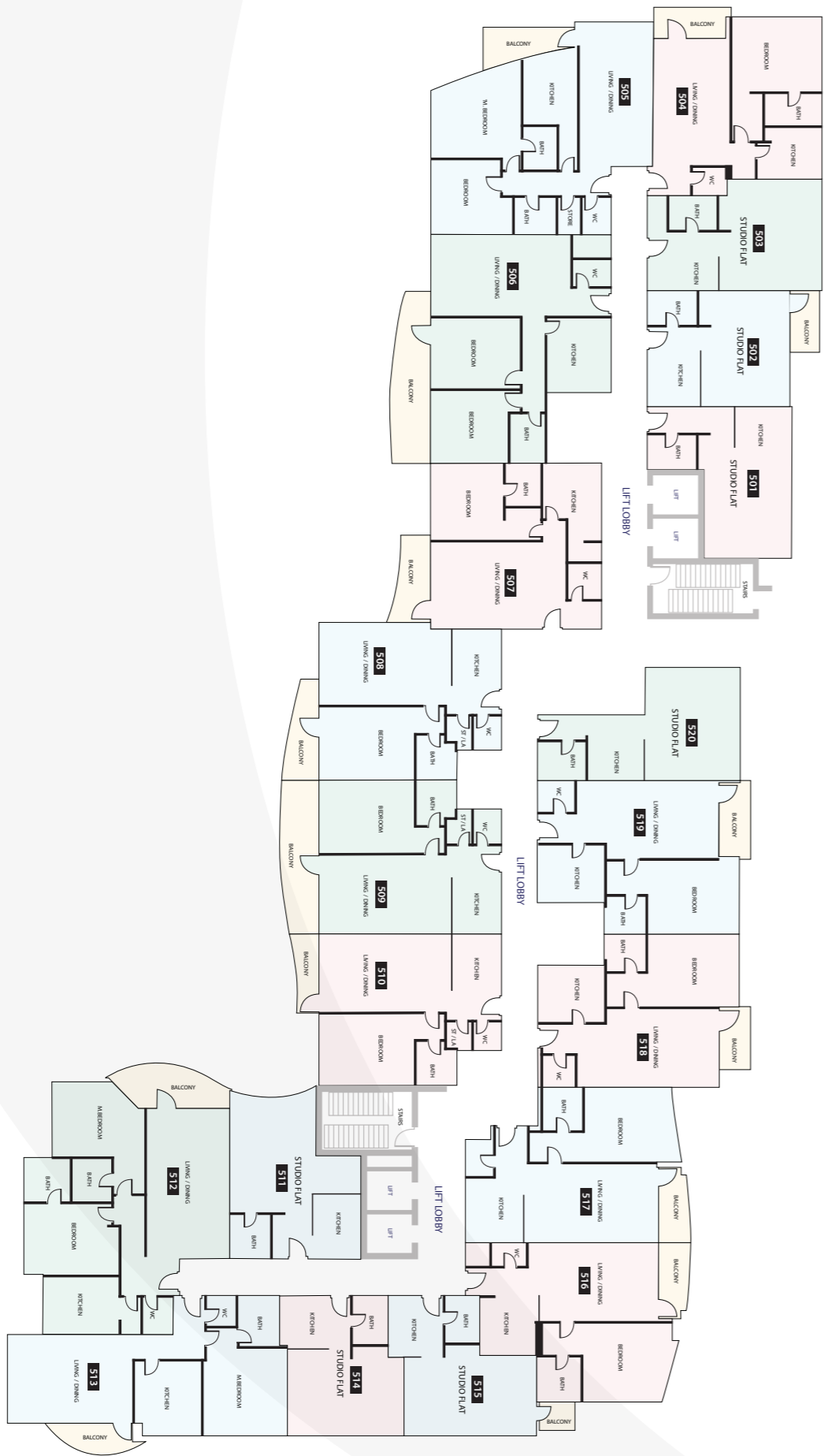
FLOOR 3



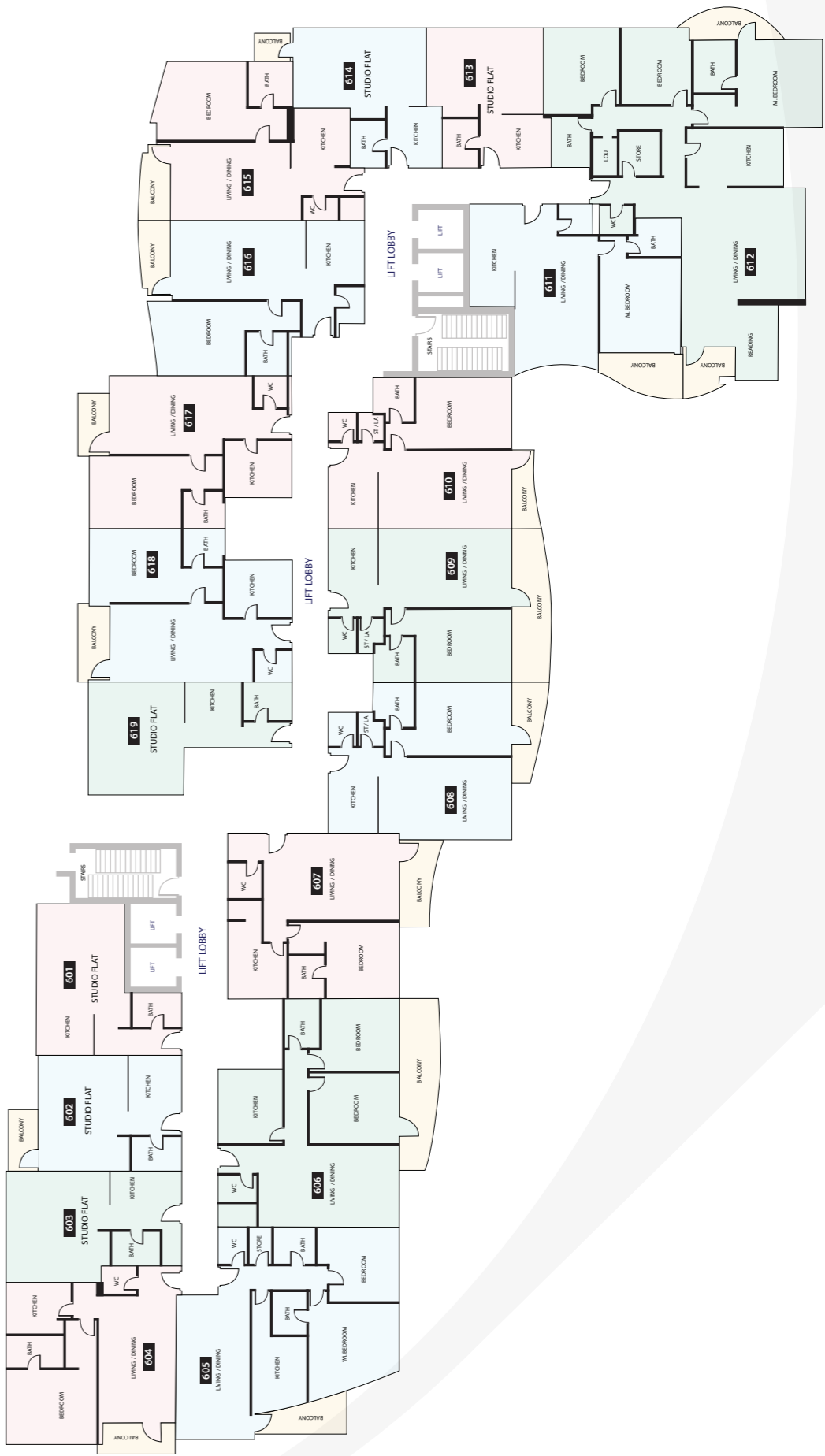
FLOOR 4



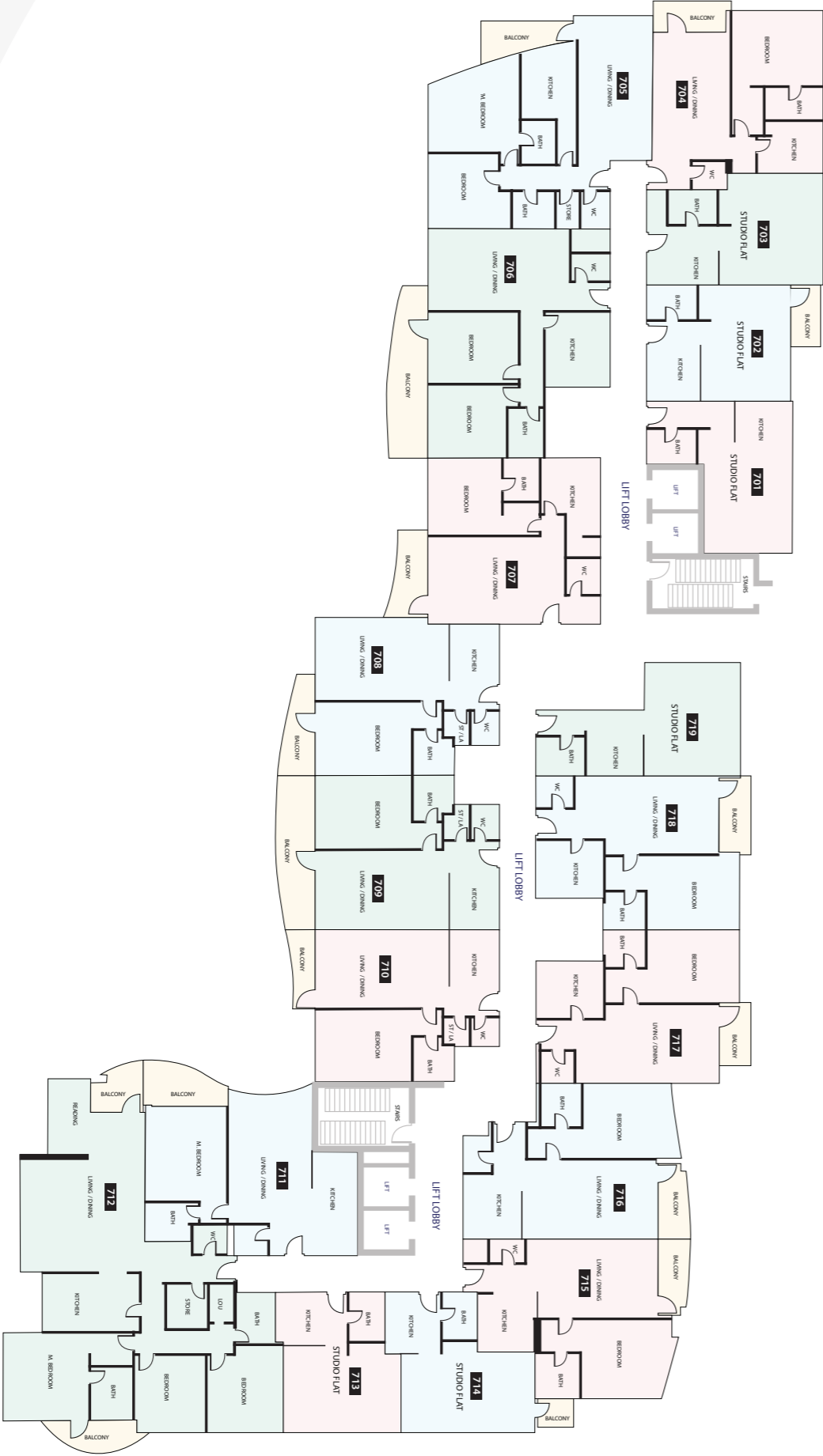
FLOOR 5



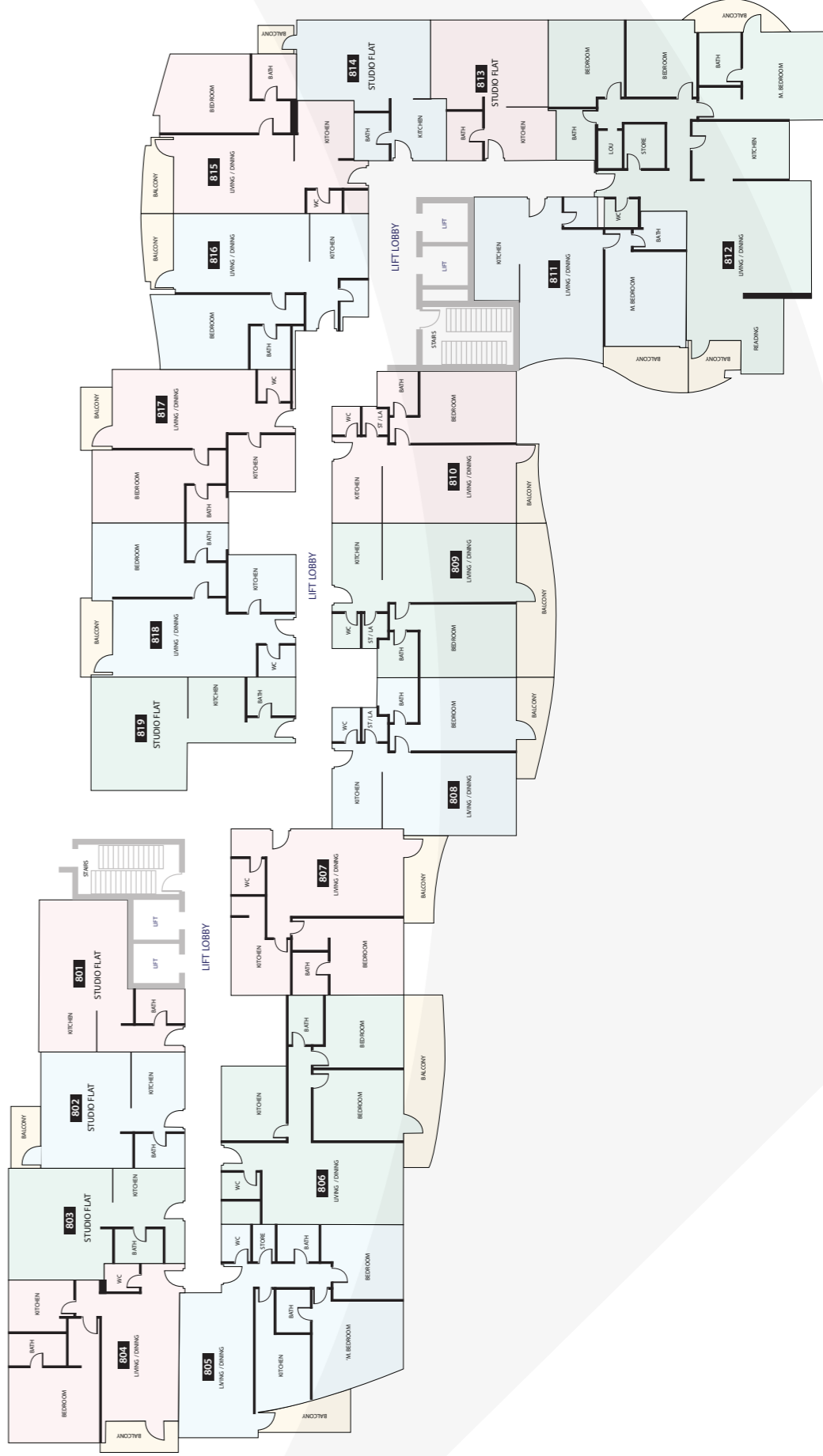
FLOOR 6



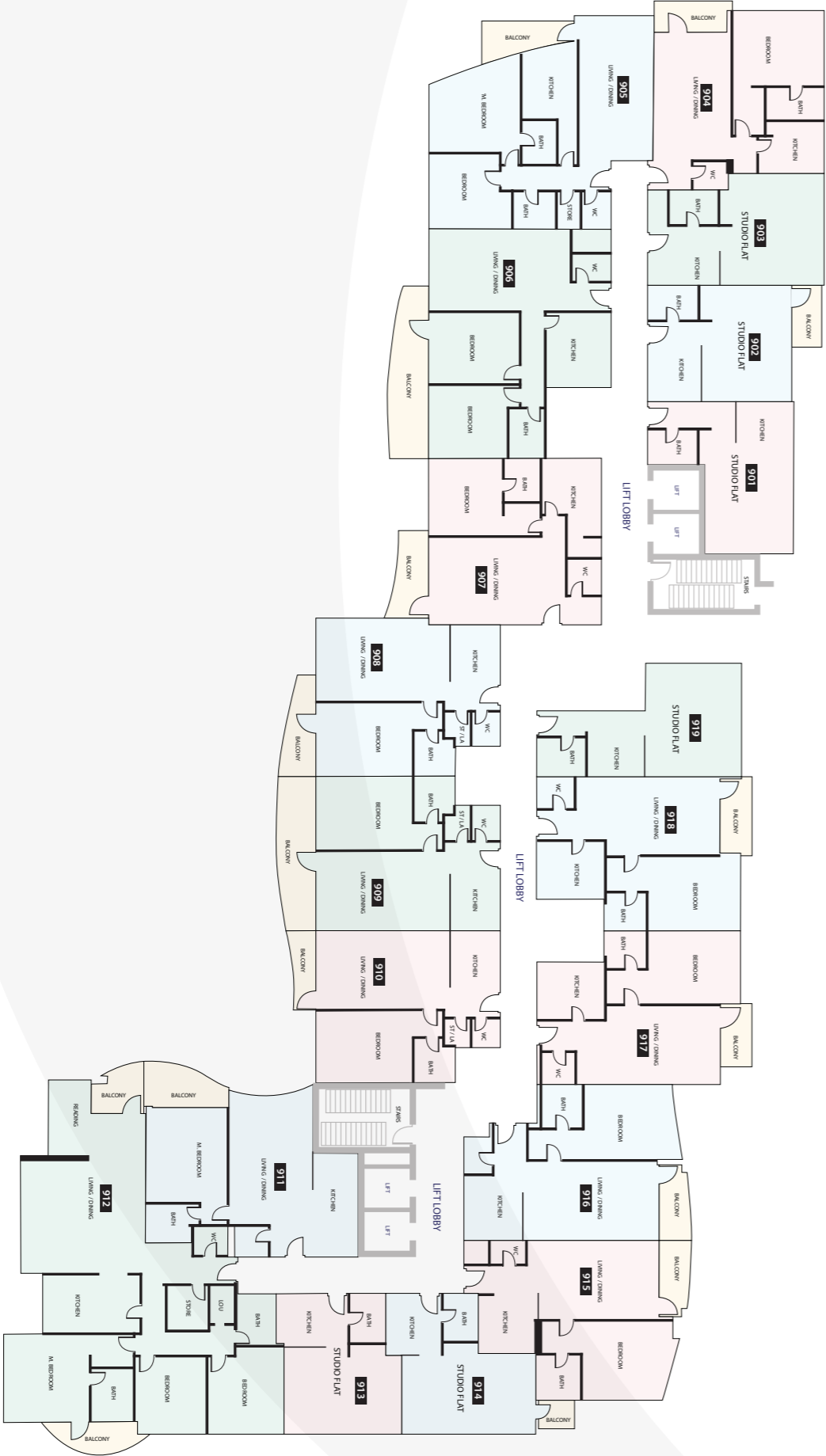
FLOOR 7



FLOOR 8

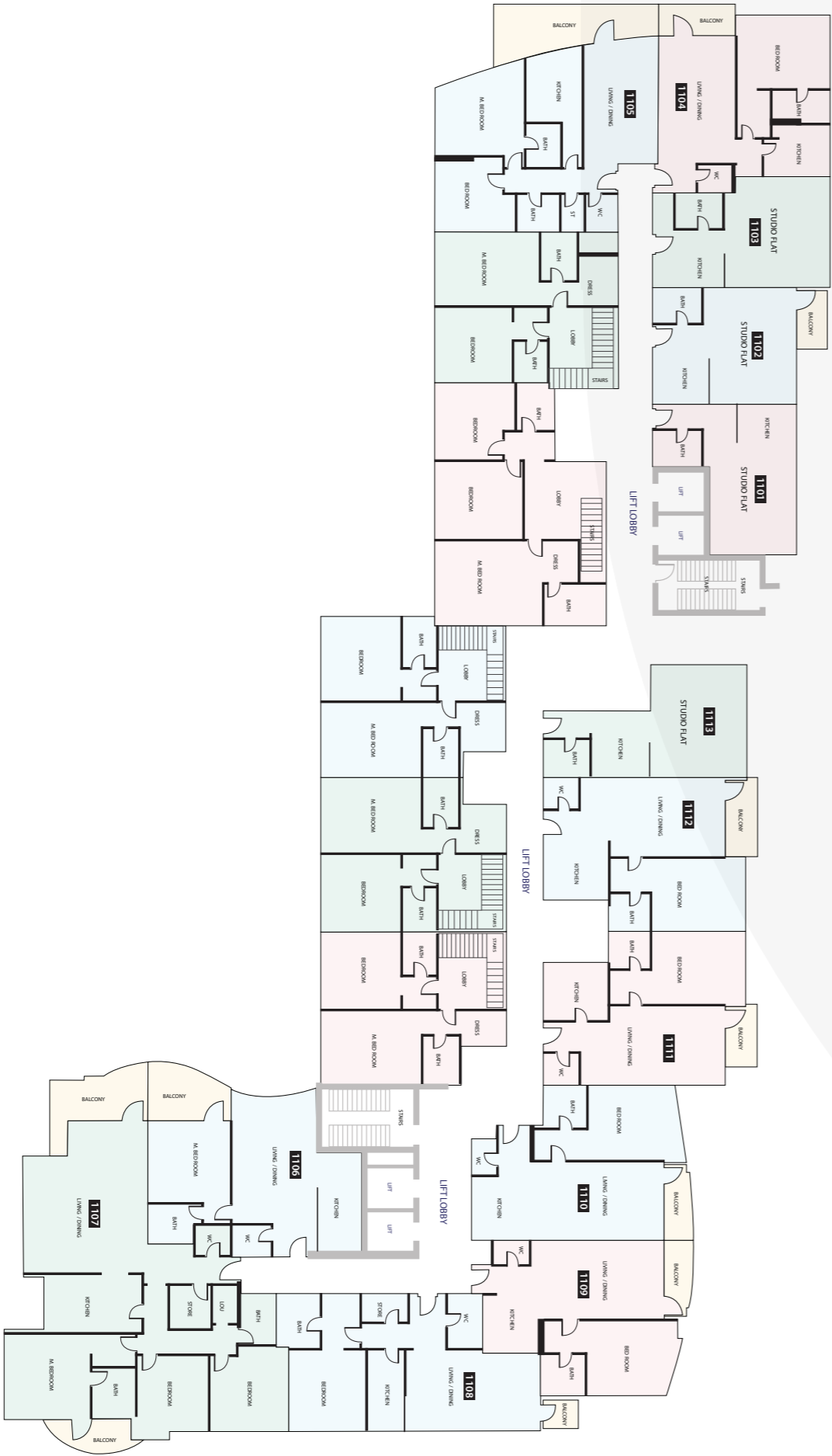


FLOOR 9



FLOOR 10





Blanco Thornton is the creation of two decades of hardwork, passion, innovation, leadership and market understanding. Built on a sound foundation of customer first ethos, Blanco Thornton represents creativity, integrity, market savvy, and proven performance in the real estate and investment arenas. Our innovative operating strategies ensure that the investments and assets are well-positioned to exceed market returns.



GROUND FLOOR, KHALIFA JUMA AL NABOODA BUILDING
NEAR DUBAI MALL, BURJ KHALIFA METRO STATION EXIT: 2
SHEIKH ZAYED ROAD, DUBAI, UAE

T: +971 4 886 6722

BLANCO THORNTON, PARADISE VIEW 1 and the tagline 'PERFECTING SYMPHONIES IN REAL ESTATE' are trademarks of BLANCO THORNTON. All trademarks, logos and brand names are property of their respective owners and may not be used in connection with any product, service or solution that is not a BLANCO THORNTON communication and will require prior approval.